



TAIJI

PRODUCT CATALOG

NEXT 
HOSPITALITY
Make New **OMOTENASHI**



NEW

Make New OMOTENASHI

HOTCABI Pro model

2 models × 2 types

Simple and Easy!



- Easy control by simple control panel with pictograph. Also easy to see the operating mode with LED light.
- Smooth touch control panel is located upper side that reduces contamination by foreign objects.



Functional! High-spec!

- Chemical resistance plastic reduces chemical attack cracking.
- Great temperature control system and better heat permeability provide additional stability.



Made in Japan

 UV lamp model

- 1 door type HC-11UV Pro
- 2 door type HC-21UV Pro

 HOT & COOL model

- 1 door type HC-11LX Pro
- 2 door type HC-21LX Pro

HOTCABI/COOLCABI

Upgraded cabi for advanced presentation that provides a welcome service and gracious expression of hospitality.

HC-11UV Pro

UV lamp model
1 door type



Sterilizing UV lamp



HC-11LX Pro

HOT & COOL CONVERTIBLE CABI
1 door type



Convertible HOT COOL



HC-21UV Pro

UV lamp model
2 door type

Sterilizing UV lamp



HC-21LX Pro

HOT & COOL CONVERTIBLE CABI
2 door type

Convertible HOT COOL HOT COOL



Model	HC-11UV Pro	HC-21UV Pro	HC-11LX Pro	HC-21LX Pro
Supply voltage	AC110-120V AC220-240V	AC110-120V AC220-240V	AC110-120V* Available on the demand AC220-240V	AC110-120V* Available on the demand AC220-240V
Power consumption	190W	380W	150W	300W
Outer dimensions	W450 x D363 x H322 mm	W450 x D363 x H562 mm	W450 x D363 x H322 mm	W450 x D363 x H562 mm
Inner dimensions	W348 x D207 x H152 mm	W348 x D207 x H152 mm x 2 door	W348 x D207 x H152 mm	W348 x D207 x H152 mm x 2 door
Capacity	11 liters 55 hand towels (approx. 25 face towels)	11 liters x 2 door 55 hand towels x 2 door (approx. 25 face towels) x 2	11 liters 55 hand towels (approx. 25 face towels)	11 liters x 2 door 55 hand towels x 2 door (approx. 25 face towels) x 2
Net weight	7.5 kg	11.5 kg	10 kg	17 kg
Tem. control	Electronics control	Electronics control	Electronics control / Peltier device	Electronics control / Peltier device
Cabinet inside temp.	70-80°C (158-176°F)	70-80°C (158-176°F)	HOT: 70-80°C (158-176°F) COOL: 7-10°C (44-50°F)	HOT: 70-80°C (158-176°F) COOL: 7-10°C (44-50°F)
Accessories	Basket x 1, drain tray x 1	Basket x 2, drain tray x 1	Basket x 1, drain tray x 1	Basket x 2, drain tray x 1
Sterilizing lamp	GTL-2 2W x 1	GTL-2 2W x 2	-	-
Safety standard	ETL / C-ETL / CE (Applying)	ETL / C-ETL / CE (Applying)	CE (Applying)	CE (Applying)

● UV lamp does not light up when the door is opened. 2

HOTCABI/COOLCABI

Hot-selling and long seller item line of towel warmers and cooler are here to provide happiness and comfort.

HC-6 Stylish and Compact!



HC-6 (W)
White



HC-6 (SUS)
Stainless steel



HC-6 (K)
Black

HC-12UVe Large design for extra storage A sterilizing UV lamp keeps interior hygienic



Sterilizing UV lamp



HC-12UVe (W)
White



HC-12UVe (SUS)
Stainless steel



HC-12UVe (K)
Black

HC-18S/F Great choice of "Front" or "Side" opening door



HC-18F



HC-18S

Model	HC-6	HC-12UVe	HC-18S/F
Supply voltage	AC110-120V (W) AC220-240V (W), (K), (SUS)	AC110-120V (W) AC220-240V (W), (K), (SUS)	AC220-240V
Power consumption	120W	200W	180W
Outer dimensions	W300 x D307 x H230 mm	W455 x D320 x H290 mm	W450 x D275 x H355 mm
Inner dimensions	W220 x D220 x H135 mm	W368 x D213 x H170 mm	W374 x D195 x H250 mm
Capacity	6 liters 25-30 hand towels (approx. 10 face towels)	13 liters 50-70 hand towels (approx. 28 face towels)	18 liters 80-96 hand towels (approx. 28 face towels)
Net weight	4 kg	7.5 kg	6.5 kg
Tem. control	Bimetal thermostat	Electronics control	Bimetal thermostat
Cabinet inside temp.	70-80°C (158-176°F)	70-80°C (158-176°F)	70-80°C (158-176°F)
Safety device	Thermal fuse	Thermal fuse	Thermal fuse
Accessories	Basket x 1, drain tray x 1	Basket x 1, drain tray x 1	Basket x 2, drain tray x 1
Sterilizing lamp	-	GTL-2 2W x 1	-
Safety standard	UL / C-UL / CE / Nemko	UL / C-UL / CE / Nemko	-

Oshibori



Oshibori (cotton 100%)					
Model number	60 Monme	70 Monme	80 Monme	90 Monme	100 Monme
Weight /dz	230g	265g	300g	338g	375g
Size	28 x 28 cm			30 x 30 cm	31 x 31 cm
	8 x 8	8 x 8	4 x 4	Plain	Plain
COO	Vietnam				
Remarks	100dz/bale, Min. 1,000dz [Ship directly from Vietnam]				

HC-38 Large capacity towel storage



HC-38

HC-38UV Large capacity towel storage with sterilizing UV lamps



Sterilizing UV lamp

HC-38UV

HC-8 Great in combination with the CC-8. High/low temperature setting

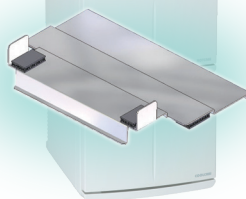


High durability
ASA resin adopted



HC-8

Joint plate (sold separately)



CC-8 Stay cool! You can combine with the HC-8 for both warm and cool use



High durability
ASA resin adopted



CC-8

COOL CABI

aromachip
A variety of fragrances are available.
Create your own fragrances of relaxation with aromachip. It's ideal to use with TAJI towel warmer.

Item: aromachip
Quantity: 30 chips/package
Fragrance: Lemon, Jasmine, Forest

Model	HC-38	HC-38 UV	HC-8	CC-8
Supply voltage	AC110-120V AC220-240V	AC110-120V	AC220-240V	AC220-240V
Power consumption	400W	400W	140W	85W
Outer dimensions	W450 x D410 x H450 mm	W450 x D410 x H450 mm	W300 x D340 x H261 mm	W300 x D340 x H261 mm
Inner dimensions	W360 x D316.5 x H345 mm	W360 x D316.5 x H345 mm	W227 x D237 x H152 mm	W227 x D182 x H152 mm
Capacity	38 liters 150-200 hand towels (approx. 66 face towels)	38 liters 150-200 hand towels (approx. 66 face towels)	8 liters 35-45 hand towels (approx. 15 face towels)	6 liters
Net weight	12 kg	12 kg	4.5 kg	5 kg
Tem. control	Bimetal thermostat	Bimetal thermostat	Bimetal thermostat	Peltier device
Cabinet inside temp.	70-80°C (158-176°F)	70-80°C (158-176°F)	L: 60-70°C, H: 70-80°C (L: 140-158°F, H: 158-176°F)	7-10°C (44-50°F)
Safety device	Thermal fuse	Thermal fuse	Thermal fuse	-
Accessories	Basket x 3, drain tray x 1	Basket x 3, drain tray x 1	Basket x 1, drain tray x 1	Drain tray x 1
Sterilizing lamp	-	GTL-2 2W x 3	-	-
Safety standard	-	-	CE/Nemko	CE/Semko

● UV lamp does not light up when the door is opened.

Sake Warmer Dispenser

TAIJI sake warmer dispensers are capable of warming Japanese sake to a desirable temperature by a finger-tip operation.



Ti-1



Ti-2



TSK-130B



4L tank (option)

Model	Ti-1	Ti-2	TSK-130B
Supply voltage	AC110-120V / 220-240V	AC110-120V / 220-240V	AC110-120V
Power consumption	0.5kw	0.5kw	1.0kw
Sake feeder	1.8L bottle	3.6L tank	Cubic Sake container (5-18L) 4L tank (option)
Tem. control	Variable thermostat	Variable thermostat	Electronics control
Safety device	Line fuse	Line fuse	Line fuse
Heating method	Indirect via water bath	Indirect via water bath	Indirect via water bath
Outer dimensions	W160 x D345 x H483.5 mm	W160 x D345 x H625 mm	W310 x D375 x H850 mm
Mini. Installation space	W360 x D550 x H916 mm	W360 x D550 x H850 mm	W540 x D580 x H950 mm
Net weight	5.8 kg	6.7 kg	9.3 kg
Safety standard	-	-	-

1.8L sake bottle / serving bottle / Cubic sake container not included

Sake Warmer & Sake Thermometer

Countertop heartwarming presentation for serving tasty and perfect warmed sake.

NEW



HS-03



TST-100A



Model	HS-03
Supply voltage	AC110-240V
Power consumption	200V-500W
Materials	Akita cedar / Stainless-steel
Outer dimensions	W300 x D183 x H231 mm
Inner dimensions	W260 x D116 x H124 mm
Capacity	360ml bottle x 3
	180ml bottle x 6
	Chirori tumbler x 2
	2.5L
Net weight	3 kg
Tem. control	Variable thermostat
Temperature	30-90°C (86-194°F)
Accessories	Lid x 1, Drainboard x 1, Bottle Cap x 1
	Thermometer x 1, Holder x 1, Power cord x 1
Safety standard	-



Serving bottle (black) 320cc / (white) 150cc
Available on the demand

Model	TST-100A
Lithium battery	CR2032 x 1
Temperature measurement range	-50°C to 300°C (-58 to 572°F)
Dimensions / Net weight	Length 223 x W34 x Thickness 15 mm / 35g
Probe	Φ4 x 146
Package dimensions	250 x 100 x 20 mm
Accessories	Cap x 1 / Lithium battery x 1

Standard accessory for sake warmer
Also sold separately

Serving bottle / sake cup not included
Available on the demand



HS-8N



Wooden frame
(Option)

Model	HS-8N
Supply voltage	AC110-120V
Power consumption	0.5kw
Materials	Stainless-steel
Outer dimensions	W251 x D196 x H253 mm
Inner dimensions	W249 x D194 x H170 mm
Capacity	360ml bottle x 8
	180ml bottle x 12
Net weight	3 kg
Tem. control	Variable thermostat
Temperature	30-90°C (86-194°F)
Accessories	Lid x 1, Drainboard x 1, Bottle Cap x 1
	Thermometer x 1
Safety standard	-

Serving bottle / sake cup not included

Countertop Display

Our stylish cooling device providing the ideal solution to keep fish or poultry chilled. Electric food warming showcase perfects for any kind of finger foods.

CP-940 Cool plate

NEW



Model	CP-940
Supply voltage	AC100V
Power consumption	450W
Plate dimensions	W900 x D400 mm
Outer dimensions	W940 x D440 x H122 mm
Option	CP-940 / bare
	CP-940(GW) / with Grass White
	CP-940(GB) / with Grass Black
	CP-940(IB) / with Ice Box
Net weight	17kg
Tem. control	Electronics control / Peltier device
Temperature	7±5°C (35-53°F)
	(at an ambient temperature 25°C)
Accessories	Depending on option
Safety standard	-

OSL-450 / OSL-600 Food Display Warmer

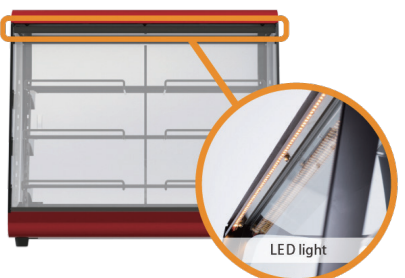


NEW



Features:

- Terraced shelf board height adjustment for sectional shelf capable of precisely adjusting the height of a shelf rack.
- LED light attracts the customers to the ever-delicious looking food.
- Easy control with upper switch and control knobs.



Model	OSL-450	OSL-600
Supply voltage	AC220-240V	Available on the demand
Power consumption	420W-500W	425W-505W
Temperature control	40°C-80°C (Thermostat setting 135°C)	
Illumination lamp	LED 24V 8.4W	LED 24V 12W
Outer dimensions	W453 x D400 x H535 mm	W603 x D400 x H535 mm
Inner dimensions	W440 x D (360 / 266) x H413 mm	W590 x D (360 / 266) x H413 mm
Net weight	22kg	25kg
Accessories	Shelf rack x 3, Water tray x 1	

Infrared Heat Lamp

Heat lamps enhance your food presentation with outstanding design while keeping foods warm and looking great.

ILC-25



(G) gold



(S) stainless steel

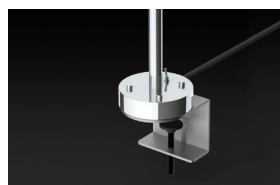


(GR) gold and red

SL-25(CL)



SL-25(CL)



SL-25(CL) detail



SL-25(BA)detail

SL-25(BA)



SL-25 (BA) Base plate type / SL-25 (CL) Clip type

Model	ILC-25	SL-25
Supply voltage	AC110-120V / 220V	AC110-120V / 220V
Power consumption	185W	185W
Infrared lamp	185W (E27)	185W (E27)
Outer dimensions	Φ 170 x H257mm	W257 x D366~600 x H650~830 mm
		W257 x D366 mm (Base plate)
Net weight	650 g	4.9 kg
Accessories	1.5m power cord, power switch	2m power cord, power switch
Variation	(G) / (S) / (GR)	(BA) / (CL)

Gas and Electric Griller



Very fuel efficient as it utilizes infrared heating to reach extremely high temperatures comparable to charcoal using less gas and directly heats foods instead of heating the air, therefore retaining more moisture. Also capable of using charcoal to give foods additional scent and flavour.



KA-55G



KA-75G



KA-95G



KA-115G

Model	KA-55G	KA-75G	KA-95G	KA-115G
Heating area(mm)	400×350	600×350	800×350	1,000×350
Power Consumption, Natural Gas	kW	10.5	15.7	20.9
	BTU	36,000	54,000	72,000
Power Consumption, LPG	kW	10.5	15.7	20.9
	BTU	36,000	54,000	72,000
Suitable Gas Hose Natural Gas	Natural Gas	13mm dia.	13mm dia.	20A
	LPG	9.5mm dia.	9.5mm dia.	20A
Dimension(mm)	W540×D610×H384	W740×D610×H384	W940×D610×H384	W1140×D610×H384
Net weight	45kg	55kg	70kg	80kg



Smokeless, get 850°C at 90 seconds. Juicy & crispy grilling!!
Safe system; Low voltage 20V only running on the heater. Power supply of single phase 220V is used but heater voltage has been lowered to 20V by built-in transformer.



H-123YC



P-123KC



P-124KC



TAN-4

Model	H-123YC	P-123KC	P-124KC	TAN-4
Heating area(mm)	310×200	380×110	380×150	400×130
Power Consumption kW	3.8	3.4	4	3.4
Supply Voltage	220V 1ph	220V 1ph	220V 1ph	220V 1ph
Rated Amperage	18A	16A	19A	16A
Heating Material	Nichrome Wire	Nichrome Wire	Nichrome Wire	Nichrome Wire
Heating Control	3 Steps	3 Steps	3 Steps	On / Off Only
Dimension(mm)	W450×D600×H250	W520×D410×H380	W520×D410×H380	W630×D310×H290
Net weight	57kg	55kg	57kg	45kg

Ice Shaver

Ice Bowl Maker



SI-100E



FM-800E



SI-3B



AK-300

Cold Bowls-Use as decorative serving dish to keep food chilled!!



Ice bowl sample images

Model	Block Ice SI-100E	Cube Ice FM-800E	Block Ice SI-3B
Outer Dimension / Net Weight	W300×D385×H671(mm) / 32 kg	W314×D415×H503(mm) / 26 kg	W360×D360×H680(mm) / 22 kg
Shaving Capacity	2.2~2.8(kg/min)	2.3~8.0(kg/min)	0.8(kg/min)
Supply Voltage / Power Consumption	220-240V (50 / 60Hz) 274-326W	220-240V (50 / 60Hz) 284-338W	by manual -

Model	AK-300
Outer Dimension	W376×D427×H750mm
Net Weight	20 kg
Making Capacity	1 pc. /15 seconds
Ice Bowl maximum size	within 205mmΦ / within height 110mm

Beverage Warmer

Bun Steamer



SW30-E2



SW40-N2



PW60-N3

Model	SW30-E2	SW40-N2	PW60-N3
Outer Dimension	W248×D425×H484(mm)	W335×D425×H484(mm)	W335×D425×H704(mm)
Net weight	9 kg	12 kg	17 kg
Supply Voltage / Power Consumption	220-240V 284-338W	220-240V 274-326W	220-240V 441-489W



MJ-45A



BS460-EU

Model	MJ-45A	BS460-EU
Outer Dimension	W400 × D500 × H756 (mm)	W478 × D535 × H854 (mm)
Net Weight	24.5kg	50kg
Capacity	5 inner trays(300×300mm)	5 inner trays (383×364mm)
Operating Temp.	75°C±1 (Ajustable)	75°C±1 (Ajustable)
Heating Method	Aluminum Die-casting Heater	Aluminum Die-casting Heater
Power Consumption / Supply Voltage	979W / 100V / 50Hz / 60Hz	1500W-1780W / 220V-240V / 50Hz / 60Hz
Display Light	Fluorescent Lamp (30W×1)	Fluorescent Lamp (30W×1)

TAIJI

TAIJI & CO., LTD. (JAPAN)
Sales and Marketing International Division
Address: 8-2, Okawa-cho, Kawasaki-ku,
Kawasaki-shi, Kanagawa, 210-0858 JAPAN
Phone: +81-44-329-6338
Fax: +81-44-329-5860
URL: <http://www.taiji.co.jp/e>